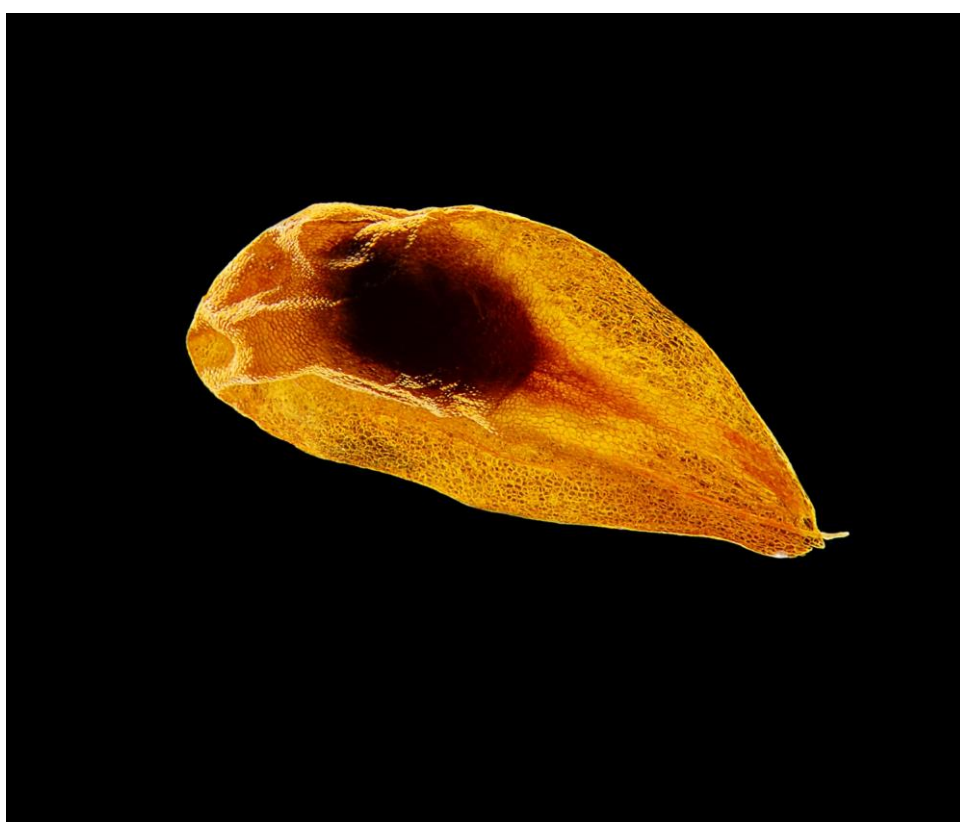


UNIVERSITAS CAROLINA PRAGENSIS * FACULTAS RERUM NATURALIUM

Hortus botanicus Universitatis Carolinae

INDEX SEMINUM 2018




**Botanická
zahrada** Přírodovědecké
fakulty UK
v Praze

Director:

Ing. Ladislav Pavlata

Collectors:

J. Dvořáková, M. Hrouda, V. Hroudová, Š. Kindlová,
T. Procházka, P. Procházková, Z. Šípek a L. Štěpánová

Address:

The Charles University
Faculty of Science
BOTANIC GARDEN
Na Slupi 16
128 01 Praha
CZECH REPUBLIC

Web: www.bz-uk.cz

E-mail: botazah@natur.cuni.cz, index@natur.cuni.cz

Geographic information

Latitude: 50°4'14.494" N

Longitude: 14°25'11.449" E

Altitude: 205 m a.s.l.

Climatic information

Month	1	2	3	4	5	6	7	8	9	10	11	12
Mean Air Temperature (° C)	-0,9	0,8	4,6	9,2	14,2	17,5	19,1	18,5	14,7	9,7	4,4	0,9
Total Precipitation (mm)	19,8	19,2	24,4	31,8	59,9	58,8	58,3	63,2	37,1	26,3	28,2	19,5
Sunshine Duration (h)	44,6	69,2	119,0	162,8	208,3	210,8	219,6	210,4	156,4	117,3	50,1	42,5

Dear Madam, Dear Sir,
Dear Colleague,
we are pleased to send you herewith our **Index seminum 2018**.

The nomenclature was taken mainly from 1) the current checklist of the new determination key for plants of the Czech Republic (indigenous plants), 2) the on-line checklist of plants of Slovakia (plants native to Slovakia) and 3) The Plant List (exotic plants).

Only requests reaching us before **February 28, 2018** will be handled in sequence of entry.

Please limit your order to **20 numbers!**

Order-forms which will reach us after that date will not be handled!

On request, the original locality of most species can be supplied.

If there are any changes or faults in your institution's address, please inform us so that correction will be introduced in our database.

R = rare; we have only a limited amount of seeds.

Send to:

**The Charles University
Faculty of Science
BOTANIC GARDEN
128 01 Praha, Na Slupi 16
CZECH REPUBLIC**

We also accept your e-mail orders on our e-mail address index@natur.cuni.cz.



DESIDERATA 2018 :

Your address:

1. Seeds and fruits collected from plants cultivated outdoors in the Botanical Garden

	Aceraceae	39	<i>Silybum marianum</i> (L.) Gaertner
1	<i>Acer macrophyllum</i> Pursh	40	<i>Tanacetum balsamita</i> L.
	Alismataceae	41	<i>Urospermum dalechampii</i> (L.) Scop. ex F.W.Schmidt
2	<i>Alisma plantago-aquatica</i> L.	42	<i>Inula britannica</i> L.
	Amaryllidaceae	43	<i>Pilosella lactucella</i> (Wallr.) P.D.Sell & C.West
3	<i>Allium nutans</i> L.	44	Betulaceae
4	<i>Allium scorodoprasum</i> L.	45	<i>Alnus incana</i> (L.) Moench
5	<i>Allium senescens</i> L. subsp. <i>montanum</i> (Fries) Holub	46	<i>Alnus subcordata</i> C.A. Mey.
	Apiaceae		Bignoniaceae
6	<i>Ammi visnaga</i> (L.) Lam.		<i>Catalpa bignonioides</i> Walter
7	<i>Angelica archangelica</i> L.	47	Brassicaceae
8	R <i>Astrantia major</i> L.	48	<i>Arabis allionii</i> DC.
9	R <i>Bupleurum falcatum</i> L.	49	<i>Arabis alpina</i> L.
10	<i>Eryngium campestre</i> L.	50	<i>Biscutella didyma</i> L.
11	<i>Ferula assa-foetida</i> L.	51	<i>Brassica nigra</i> (L.) W.D.J. Koch
12	<i>Foeniculum vulgare</i> Mill.	52	<i>Isatis tinctoria</i> L.
13	R <i>Chaerophyllum hirsutum</i> L.	53	R <i>Kernera saxatilis</i> (L.) Sweet
14	<i>Levisticum officinale</i> W.D.J. Koch		<i>Lunaria rediviva</i> L.
15	<i>Pimpinella anisum</i> L.	54	Campanulaceae
16	<i>Sium sisarum</i> L.	55	<i>Campanula alliariifolia</i> Willd.
17	<i>Smyrniolum perfoliatum</i> L.	56	<i>Campanula americana</i> L.
	Apocynaceae	57	<i>Campanula raineri</i> Perp.
18	<i>Asclepias curassavica</i> L.	58	<i>Lobelia siphilitica</i> L.
	Araliaceae		<i>Platycodon grandiflorus</i> (Jacq.) A. DC.
19	<i>Eleutherococcus sieboldianus</i> (Makino) Koidz.	59	Cannabaceae
	Aristolochiaceae		<i>Celtis occidentalis</i> L.
20	<i>Aristolochia clematitis</i> L.	60	Caryophyllaceae
	Asparagaceae	61	<i>Agrostemma githago</i> L.
21	<i>Anthericum liliago</i> L.	62	<i>Cerastium biebersteinii</i> DC.
22	<i>Convallaria majalis</i> L.		<i>Dianthus hyssopifolius</i>
23	<i>Polygonatum odoratum</i> (Mill.) Druce	63	subsp. <i>gallicus</i> (Pers.) M.Laínz & Muñoz Garm
	Asteraceae	64	<i>Dianthus superbus</i> L.
24	<i>Arctium tomentosum</i> Mill.	65	subsp. <i>alpestris</i> (Kablík. ex R. Uechtr.) Čelak.
25	<i>Bidens pilosus</i> L.	66	<i>Gypsophila paniculata</i> L.
26	<i>Centaurea benedicta</i> (L.) L.	67	<i>Lychnis chalcedonica</i> L.
27	R <i>Centaurea macrocephala</i> Willd.	68	<i>Saponaria calabrica</i> Guss.
28	<i>Cichorium intybus</i> L.	69	<i>Saponaria officinalis</i> L.
29	<i>Echinacea angustifolia</i> DC.		<i>Silene gallica</i> L.
30	<i>Echinacea purpurea</i> (L.) Moench	70	<i>Silene samojedorum</i> (Sambuk) Oxelman
31	<i>Eupatorium purpureum</i> L.	71	Cistaceae
32	<i>Inula helenium</i> L.		<i>Helianthemum grandiflorum</i> (Scop.) DC.
33	<i>Jurinea alata</i> (Desf.) Cass.	72	<i>Tuberaria guttata</i> (L.) Fourr.
34	<i>Leibnitzia anandria</i> (L.) Turcz.		Cornaceae
35	<i>Ratibida pinnata</i> (Vent.) Barnhart	73	<i>Cornus sanguinea</i> L.
36	<i>Rhagadiolus stellatus</i> (L.) Gaertn.	74	Cupressaceae
37	<i>Rhaponticum carthamoides</i> (Willd.) Iljin		<i>Chamaecyparis pisifera</i> (Siebold & Zucc.) Endl.
38	<i>Scorzonera hispanica</i> L.		<i>Metasequoia glyptostroboides</i> Hu & W.C.Cheng

	Cyperaceae	115	Nepeta cataria L.
75	Cladium mariscus (L.) Pohl	116	Origanum vulgare L.
	Dipsacaceae	117	Salvia austriaca Jacq.
76	Cephalaria gigantea (Lebed.) Bobrov	118	Salvia judaica Boiss.
	Elaeagnaceae	119	Salvia officinalis subsp. lavandulifolia (Vahl) Gams
77	Elaeagnus angustifolia L.	120	Salvia sclarea L.
	Euphorbiaceae	121	Linaceae
78	Euphorbia lathyris L.		Linum usitatissimum L.
	Fabaceae	122	Lythraceae
79	Baptisia australis (L.) R.Br.		Cuphea lanceolata W.T. Aiton
80	Colutea arborescens L.	123	Magnoliaceae
81	Coronilla vaginalis Lam.		Magnolia obovata Thunb.
82	Galega officinalis L.	125	Malvaceae
83	Gleditsia triacanthos L.	126	Abelmoschus manihot (L.) Medik.
84	Glycyrrhiza echinata L.	127	Abutilon theophrastii Medik.
85	Glycyrrhiza glabra L.	128	Alcea rosea L. 'Nigra'
86	Gymnocladus dioicus (L.) K. Koch	129	Althaea cannabina L.
87	Lathyrus laevigatus (Waldst. et Kit.) Gren.	130	Althaea officinalis L.
88	Lathyrus niger (L.) Bernh.	131	Kitabelia vitiflora Willd.
89	Lathyrus nissolia L.	132	Malva sylvestris L.
90	R Lathyrus roseus Steven	133	Tilia americana L.
91	Lathyrus transilvanicus (Spreng.) Fritsch	134	Tilia x euchlora K. Koch.
92	Lathyrus venetus (Mill.) Wohlf.		Melathiaceae
93	Lathyrus vernus (L.) Bernh.		Paris quadrifolia L.
94	Trigonella foenum-graecum L.		Oleaceae
	Hypericaceae	135	Fraxinus americana L.
95	Hypericum androsaemum L.	136	Fraxinus pennsylvanica Marshall
96	Hypericum perforatum L.		Onagraceae
97	Hypericum x inodorum Mill.		Epilobium parviflorum Schreb.
	Iridaceae	137	Oenothera biennis L.
98	Gladiolus imbricatus L.	138	Papaveraceae
99	Iris domestica (L.) Goldblatt & Mabb.		Argemone mexicana L.
100	Sisyrinchium montanum Greene	139	Papaver orientale L.
101	Sisyrinchium californicum (Ker Gawl.) Dryand.	140	Papaver rhoeas L.
	Juglandaceae	141	Papaver somniferum L.
102	Pterocarya pterocarpa (Michx.) Kunth ex Iljinsk.	142	Plantaginaceae
	Juncaceae	143	Digitalis lutea L.
103	Luzula luzuloides (Lam.) Dandy et Wilmott	144	Misopates orontium (L.) Rafin.
	Juncaginaceae	145	Plantago lanceolata L.
104	Triglochin maritima L.	146	Plantago major L.
	Lamiaceae	147	Poaceae
105	Agastache foeniculum (Pursh) Kunze	148	Anthoxanthum odoratum L.
106	Agastache mexicana (Kunth) Lint & Epling	149	Coix lacryma-jobi L.
107	Betonica officinalis L.	150	Cynosurus echinatus L.
108	Galeopsis segetum Neck.	151	R Echinochloa crus-galli (L.) P. Beauv.
109	Glechoma hirsuta Waldst. et Kit.	152	Eleusine coracana (L.) Gaertn.
110	Lavandula angustifolia Mill.	153	Holcus lanatus L.
111	Leonurus cardiaca L.	154	Oryza sativa L.
112	Lycopus europaeus L.	155	Panicum virgatum L.
113	Marrubium vulgare L.	156	Sesleria sadleriana Janka
114	Melissa officinalis L.		Stipa pennata L.

- Polygonaceae**
157 Fagopyrum esculentum Moench
- Pontederiaceae**
158 R Pontederia cordata L.
- Primulaceae**
159 Lysimachia ephemera L.
160 Primula bulleyana Forrest
161 R Primula capitata Hook
162 Primula denticulata Sm.
163 Primula japonica A. Gray 'Apple Blossom'
164 Primula japonica A. Gray 'Miller's Crimson'
165 Primula polyneura Franch.
166 Primula rosea Royle
167 R Primula rosea Royle 'Gigas'
168 R Primula vialii Delavay ex Franch.
- Ranunculaceae**
169 Anemone canadensis L.
170 Aquilegia chrysantha A. Gray
171 Eranthis hyemalis (L.) Salisb.
172 Pulsatilla grandis Wender.
173 Ranunculus acris L.
174 Ranunculus arvensis L.
175 Thalictrum delavayi Franch.
176 Thalictrum flavum L.
177 Thalictrum simplex L.
178 Trollius altissimus Crantz
- Rosaceae**
179 Agrimonia eupatoria L.
180 Agrimonia procera Wallr.
181 Filipendula ulmaria (L.) Maxim.
182 Geum triflorum Pursh
183 Geum urbanum L.
184 Mespilus germanica L.
- 185** Physocarpus opulifolius (L.) Maxim.
186 Sanguisorba officinalis L.
187 Sorbus sudetica (Tausch) Bluff et al.
- Rutaceae**
188 Phellodendron japonicum Maxim.
189 Ruta graveolens L.
- Sapindaceae**
190 R Aesculus flava Sol.
191 Koelreuteria paniculata Laxm.
- Saxifragaceae**
192 R Heuchera americana L.
193 Saxifraga cuneifolia L.
- Solanaceae**
194 Datura metel L.
195 Datura stramonium L.
197 Nicandra physalodes (L.) Gaert.
198 Nicotiana rustica L.
199 Nicotiana tabacum L.
- Staphyleaceae**
200 Staphylea pinnata L.
- Talinaceae**
201 Talinum paniculatum (Jacq.) Gaertn.
- Typhaceae**
202 Sparganium emersum Rehm
203 Typha minima Hoppe
- Urticaceae**
204 Parietaria officinalis L.
- Verbenaceae**
205 Verbena bonariensis L.

2. Seeds and fruits from plants cultivated in the greenhouses

Amaryllidaceae

- 206 Dipcadi serotinum (L.) Medik.
Spain
- 207 Habranthus tubispathus (L'Hér.) Traub
- 208 Hippeastrum cf. blossfeldiae
Brazil, coll. Haager J.R.
- 209 R Narcissus fernandesii Pedro
sine loco

Apiaceae

- 210 Oenanthe cf. pteridifolia Lowe.
Madeira, Levada of Five Springs

Apocynaceae

- 211 Asclepias curassavica L.
- 212 Pachypodium lamerei Drake

Araceae

- 213 R Anthurium verapazense Engl.
Guatemala, coll. Haager J.R.
- 214 R Arisarum simorrhinum Durieu

Aristolochiaceae

- 215 Aristolochia litoralis Parodi

Asparagaceae

- 216 Ornithogalum princeps (Baker) J.C.Manning & Goldblatt

Asphodelaceae

- 217 Kniphofia hirsuta Codd.

Asteraceae

- 218 Berkheya purpurea Mast.
RSA
- 219 Sanvitalia procumbens Lam.
Mexico

Basellaceae

- 220 Andredera cordifolia (Ten.) Steenis
(bulbs)

Bromeliaceae

- 221 Billbergia magnifica Mez. 'var. acutisepala'

Cactaceae

- 222 R Echinocactus grusonii Hildm.
- 223 Rebutia muscula F. Ritter
- 224 Rebutia spinosissima Backeb.

Cannaceae

- 225 R Canna iridiflora Ruiz & Pav.

Colchicaceae

- 226 Androcymbium eucomoides (Jacq.) Willd.
RSA, coll. Suda J. (JS 14-389)

Commelinaceae

227 Palisota bracteosa C.B.Clarke

Crassulaceae

228 Crassula deceptor Schönland & Baker f.

Fabaceae

229 R Acacia sp.

230 Sutherlandia frutescens (L.) R. Br.
RSA, Western Cape, Hout Bay, Cape Peninsula

Gesneriaceae

231 Streptocarpus rexii (Bowie ex Hook.) Lindl.

Iridaceae

232 Freesia laxa (Thunb.) Goldblatt & J.C. Manning

233 Melasphaerula ramosa (L.) Klatt

234 R Moraea serpentina Baker
RSA, Northern Cape, Nieuwoudtville, coll. Suda J. (JS 14-471)

Lamiaceae

235 Leonotis nepetifolia (L.) R.Br.
RSA

Malvaceae

236 Pavonia sepium A. St.- Hil.

Marantaceae

237 R Marantochloa leucantha (K.Schum.) Milne-Redh.

Passifloraceae

238 R Passiflora calcarata Mast.
Madagascar, Antananarivo Province, Mt. Ibiti, Ibiti Massif

239 Passiflora capsularis L.

240 Passiflora quadrangularis L.

Plantaginaceae

241 R Plantago arborescens (Decne.) A. Hansen & G. Kunkel subsp. maderensis
Madeira

Polypodiaceae

242 Aglaomorpha drynarioides (Hook.) M.C. Roos

243 Aglaomorpha splendens Copel.

Scrophulariaceae

244 Alonsoa meridionalis (L.f.) Kuntze

Chile, Coquimbo Region, Choapa Province, Los Vilos Commune, Pichidangui, coll: Haager & Šedivá

Vitaceae

245 R Parthenocissus henryana (Hemsl.) Graebn. ex Diels & Gilg

Zingiberaceae

246 Alpinia calcarata (Haw.) Roscoe

3. Seeds and fruits collected in situ

Amaryllidaceae

- 247 R *Allium vineale* L.
Czech Republic, Prague-Lahovičky, 50.0006606N, 14.4013172E, 23.7.2017, coll. Kindlová Š.

Asteraceae

- 248 *Hypochaeris radicata* L.
Czech Republic, Jindřiš, 49.1510617N, 15.0584378E, 6.7.2017, coll. Kindlová Š.
- 249 *Petasites albus* (L.) Gaertn.
Czech Republic, Hoření Paseky, 50.7291906N, 14.9591797E, 14.5.2017, coll. Hrouda M.
- 250 *Senecio jacobaea* L.
Czech Republic, Prague-Lahovičky, 50.0020192N, 14.3995844E, 12.8.2017, coll. Kindlová Š.

Boraginaceae

- 251 R *Anchusa officinalis* L.
Czech Republic, Prague-Lahovičky, 50.0020639N, 14.3983883E, 16.9.2017, coll. Kindlová Š.
- 252 *Cynoglossum officinale* L.
Czech Republic, Dědova pískovna, 48.6335106N, 16.9602144E, coll. Kindlová Š.

Cactaceae

- 253 *Cleistocactus* cf. *baumannii* (Lem.) Lem.
Argentina, Córdoba, 4 km S Orcosuni, 647 m (further from the fence), 2015, coll. Bohata J.
- 254 *Cleistocactus* cf. *baumannii* (Lem.) Lem.
Argentina, Córdoba, 4 km S Orcosuni, 647 m (by the fence), 2015, coll. Bohata J.
- 255 *Notocactus* cf. *sessiliflorus* (Mackie ex Hook.) Krainz
Argentina, La Pampa, NP Lihuel Calel, 2016, coll. Urfus T.

Campanulaceae

- 256 *Phyteuma spicatum* L.
Czech Republic, Jindřiš, 49.1503 625N, 15.0538700E, 5.7.2017, coll. Kindlová Š.

Fabaceae

- 257 *Lotus corniculatus* L.
Czech Republic, Prague-Lahovičky, 50.0006606N, 14.4013172E, 12.8.2017, coll. Kindlová Š.

Malvaceae

- 258 *Malva moschata* L.
Czech Republic, Prague-Lahovičky, 50.0022914N, 14.3989300E, 23.8.2017, coll. Kindlová Š.

Front cover: *Gladiolus imbricatus* L. – seed
Photo © V. Sýkora 2009.
Photograph is from the book
Tajemství rostlin/Secrets of plants by V. Sýkora and V. Hroudová,
Academia, Praha 2009, www.academia.cz,
<http://www.academia.cz/tajemstvi-rostlin.html>.

