



Botanická zahrada  
Přírodovědecké fakulty UK



***INDEX SEMINUM 2023***

# HORTUS BOTANICUS UNIVERSITATIS CAROLINAE FACULTAS RERUM NATURALIUM

**Director:**

Ing. Ladislav Pavlata

**Collectors:**

J. Dvořáková, M. Hrouda, V. Hroudová, K. Jabůrková, Š. Kindlová, E. Konečná,  
T. Procházka, P. Procházková, Z. Šípek and L. Štěpánová

**Address:**

Charles University  
Faculty of Science  
BOTANICAL GARDEN  
Na Slupi 16  
128 01 Praha  
CZECH REPUBLIC

**Web:**

[www.bz-uk.cz](http://www.bz-uk.cz)

**E-mail:**

Index orders: [index@natur.cuni.cz](mailto:index@natur.cuni.cz)

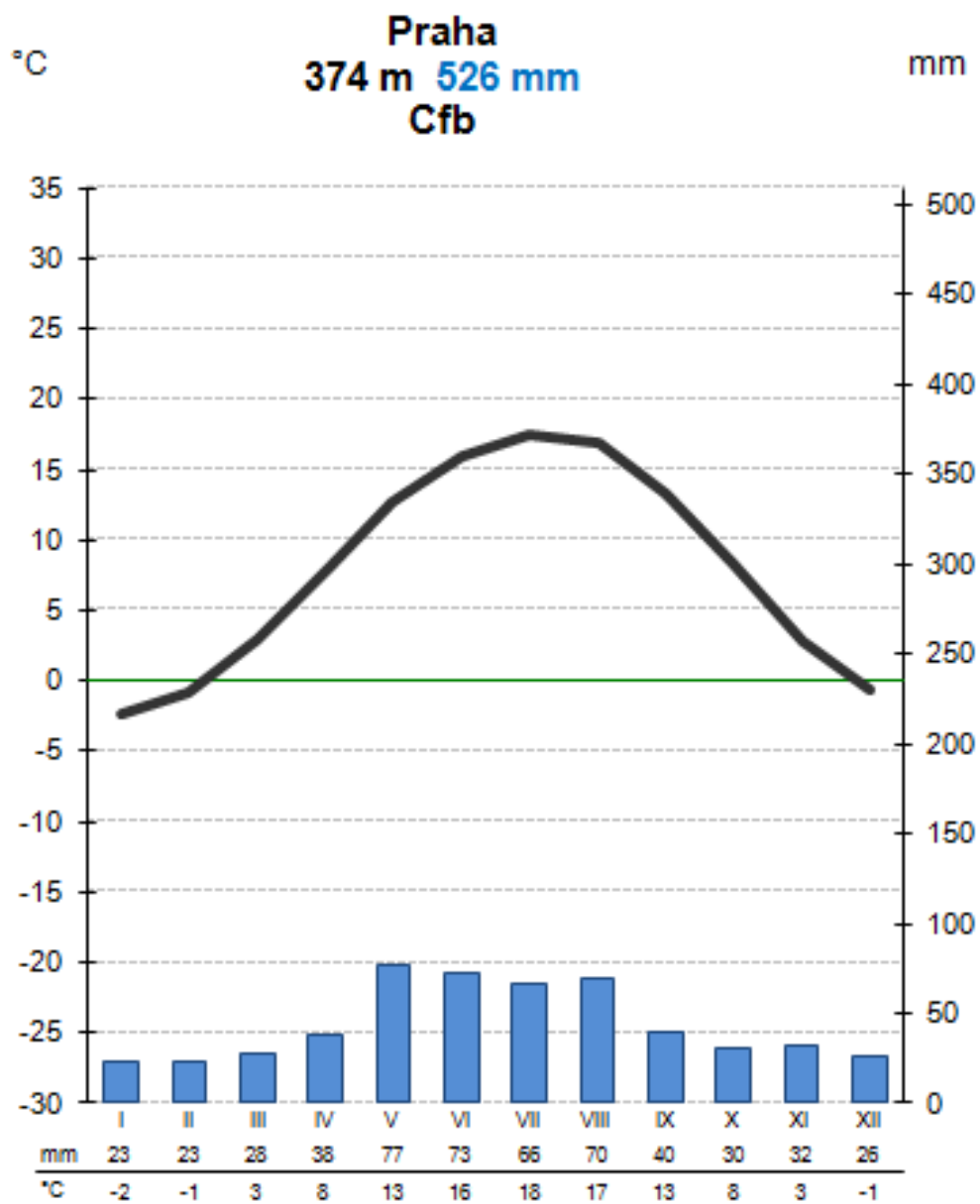
**Picture on the front page:**

*Helleborus purpurascens*, author: Tereza Malinová

## Geographic information:

Latitude: 50°4'14.494" N  
Longitude: 14°25'11.449" E  
Altitude: 205 m a.s.l.

## Climatic information:



## **Nomenclature used:**

**Indigenous plants** – Key to the flora of the Czech Republic: Kaplan Z., Danihelka J., Chrtek J. jun., Kirschner J., Kubát K., Štech M. & Štěpánek J. [eds.]. Ed. 2. - 1168p., Academia, Praha, 2019)

**Other plants** – Plants of the World Online (<https://powo.science.kew.org/>)

## **Ordering of plant material:**

Only requests reaching us before **28.2. 2023** will be processed

Please limit your order to **20 numbers!**

Orders send to: **[index@natur.cuni.cz](mailto:index@natur.cuni.cz)**

## **IPEN**

Our botanical garden is a part of the IPEN network.

You can find us under the institution code **PRAG**.

## Seeds and fruits collected from plants cultivated outdoors in the Botanical Garden :

### Alismataceae

- 1 *Alisma plantago-aquatica* L. XX-0-PRAG-VB000005

### Alstroemeriaceae

- 2 *Alstroemeria ligtu* subsp. *incarnata* Ehr.Bayer CL-0-PRAG-SR001897  
Chile, VII. Region, Camino a Laguna de Maule, 800 m (ex Chileflora)

### Amaryllidaceae

- 3 *Allium senescens* subsp. *montanum* (Pohl)Holub XX-0-PRAG-KV000425  
4 *Allium schoenoprasum* L. CZ-0-PRAG-KV000071  
Czech Republic, Praha - Modřany, 1959  
5 *Allium victorialis* L. CZ-0-PRAG-KV000074  
Czech Republic, Bílé Karpaty Mts., Boršice u Blatnice, valley of  
Boršický stream near Lipinka Mt., 1991

### Apiaceae

- 6 *Angelica archangelica* L. XX-0-PRAG-LU000004  
7 *Astrantia major* L. XX-0-PRAG-LU000717  
8 *Bupleurum falcatum* L. CZ-0-PRAG-KV001280  
Czech Republic, Lovosice, S hillside of Lovoš Mt., 2014  
9 *Carum carvi* L. XX-0-PRAG-LU000006  
10 *Laserpitium archangelica* Wulfen XX-0-PRAG-KV000688  
11 *Levisticum officinale* W.D.J.Koch XX-0-PRAG-LU000010  
12 *Pimpinella anisum* L. XX-0-PRAG-LU000012  
13 *Sium sisarum* L. XX-0-PRAG-LU000013  
14 *Smyrniium perfoliatum* L. CZ-0-PRAG-KV001129  
Czech Republic, Praha, Divoká Šárka, 1960

### Araceae

- 15 *Zantedeschia albomaculata* (Hook.) Baill. XX-0-PRAG-SR001769  
(ex Silverhill Seeds)

### Araliaceae

- 16 *Eleutherococcus sieboldianus* (Makino) Koidz. XX-0-PRAG-PE000358

## Asparagaceae

- 17 **Anthericum liliago** L. CZ-0-PRAG-KV000097  
Czech Republic, Srbsko, S hillside of Velká Hora Mt., 1960
- 18 **Anthericum ramosum** L. CZ-0-PRAG-KV000096  
Czech Republic, Praha - Velká Chuchle, 1956
- 19 **Fritillaria meleagris** L. XX-0-PRAG-KV000507
- 20 **Muscari comosum** (L.) Mill. CZ-0-PRAG-KV000799  
Czech Republic, Březová nad Svitavou, Dlouhá, 1960
- 21 **Muscari neglectum** Ten. XX-0-PRAG-KV000798
- 22 **Yucca filamentosa** L. US-0-PRAG-SR001485  
USA (ex BG Praha - Troja)

## Asphodelaceae

- 23 **Asphodeline lutea** Rchb. XX-0-PRAG-JS000313
- 24 **Bulbine abyssinica** Poelln. LS-1-M-2010/0465  
Lesotho, Ha-Monyane, 11.03. 2009 (ex BG München)
- 25 **Kniphofia buchananii** Baker ZA-0-PRAG-SR002188  
RSA, KwaZulu-Natal (ex Silverhill Seeds)

## Asteraceae

- 26 **Anthemis tinctoria** L. XX-0-PRAG-KV000095
- 27 **Arctium tomentosum** Mill. XX-0-PRAG-LU000023
- 28 **Berkheya multijuga** (DC.) Roessler LS-1-M-2007/0766  
Lesotho, Mafika Lisiu Pass, 3090 m (ex BG München)
- 29 **Bidens frondosus** L. XX-0-PRAG-VB000011
- 30 **Carlina biebersteinii** subsp. *brevibracteata* (Andrae) K. Werner XX-0-PRAG-KV000288
- 31 **Centaurea cyanus** L. XX-0-PRAG-LU000033
- 32 **Cichorium intybus** L. XX-0-PRAG-LU000034
- 33 **Cynara cardunculus** L. XX-0-PRAG-PE000723
- 34 **Cynara scolymus** L. XX-0-PRAG-LU000719
- 35 **Echinacea angustifolia** DC. XX-0-PRAG-LU000036
- 36 **Echinacea purpurea** (L.) Moench. XX-0-PRAG-LU000037
- 37 **Echinops ritro** subsp. *ruthenicus* (M.Bieb.)Nyman SK-0-PRAG-KV000420  
Slovakia, Topolčianky, 1956
- 38 **Haplopappus glutinosus** Cass. CL-0-TEBLI-01972  
Chile, Los Lagos Region, Osorno Province, Osorno Volcano, 2015  
(ex BG Teplice)
- 39 **Helichrysum albo-brunneum** S.Moore LS-1-M-2007/0796  
Lesotho, Mafika Lisiu Pass, 3090 m (ex BG München)
- 40 **Helichrysum basalticum** Hilliard LS-1-M-2010/1162  
Lesotho, Aloe polyphylla area near Katse, Ncunyanane, Lekhalong valley,  
2660 m, NE exposed, basaltic slope, 20.02. 2010  
(ex BG München)
- 41 **Inula ensifolia** L. CZ-0-PRAG-KV000637  
Czech Republic, Pavlovské vrchy Mts., 1990
- 42 **Inula germanica** L. CZ-0-PRAG-KV000638  
Czech Republic, Praha - Jinonice, 1964

43	<b>Inula helenium L.</b>	XX-0-PRAG-LU000043
44	<b>Inula hirta L.</b> Czech Republic, Praha, Prokopské údolí valley, 1962	CZ-0-PRAG-KV000640
45	<b>Inula oculus-christi L.</b>	XX-0-PRAG-KV000639
46	<b>Leontodon hispidus L.</b> Czech Republic, Praha - Komofany, 1960	CZ-0-PRAG-KV000156
47	<b>Noticastrum cf. sericeum Less. ex Phil.</b> Argentina (ex BG Teplice/ BG Berlin-Dahlem)	AR-0-B-0470199
48	<b>Rhaponticum carthamoides (Willd.) Iljin</b>	XX-0-PRAG-SY000710
49	<b>Scorzonera hispanica L.</b>	XX-0-PRAG-LU000046
50	<b>Senecio macrospermus DC.</b> RSA, Drakensberg (ex Plamengarten Frankfurt/ BG München)	ZA-0-M-1999/1975
51	<b>Silybum marianum L. (Gaertn.)</b>	XX-0-PRAG-LU000047
52	<b>Solidago virgaurea L.</b>	XX-0-PRAG-LU000048
53	<b>Tanacetum balsamita L.</b>	XX-0-PRAG-LU000028
54	<b>Tanacetum parthenium 'Alba Plena' (L.) Sch. Bip.</b>	XX-0-PRAG-SY000176
55	<b>Xeranthemum cylindraceum Sm.</b> Slovakia, Nitra - Kalvarie, 1969	SK-0-PRAG-KV000909

## Betulaceae

56	<b>Alnus incana (L.) Moench</b>	XX-0-PRAG-PE000186
57	<b>Alnus subcordata C. A. Mey</b>	XX-0-PRAG-PE000357
58	<b>Betula papyrifera Mashall</b>	XX-0-PRAG-PE000360

## Boraginaceae

59	<b>Cynoglossum montanum subsp. extraeuropaeum Brand L.</b> Azerbaijan, Zaqatala, Greater Caucasus range, Qax, Ilisu village, ca. 300 m SW of hotel, 1060-1080 m (ex BG Bonn)	AZ-0-BONN-33082
60	<b>Lithospermum officinale L.</b> Slovakia, Mužla, Čenkov, 1991	SK-0-PRAG-KV000733

## Brassicaceae

61	<b>Alliaria petiolata (M.Bieb.) Cavara et Grande</b> Czech Republic, Praha - Libuš, 1950	CZ-0-PRAG-KV000062
62	<b>Aurinia saxatilis subsp. saxatilis (L.) Desv.</b> Czech Republic, Karlštejn, 1960	CZ-0-PRAG-KV000149
63	<b>Aurinia saxatilis subsp. saxatilis (L.) Desv.</b>	XX-0-PRAG-JS000185
64	<b>Hesperis matronalis L.</b>	XX-0-PRAG-KV000574
65	<b>Isatis tinctoria L.</b>	XX-0-PRAG-SY000085
66	<b>Lunaria rediviva L.</b> Slovakia, Muráň, 1963	SK-0-PRAG-KV000745

## Campanulaceae

- |    |  |                    |
|----|--|--------------------|
| 67 | <b>Campanula moesiaca</b> Velen.<br>Serbia, Sar Planina, next to Brecovica, up to 1600 m (ex BG München) | RS-0-M-1986/2888   |
| 68 | <b>Codonopsis lanceolata</b> (Siebold & Zucc.) Benth. & Hook.f. ex                                       | XX-0-PRAG-LU000188 |
| 69 | <b>Codonopsis pilosula</b> (Franch.) Nannf.  | XX-0-PRAG-LU000189 |
| 70 | <b>Codonopsis pilosula</b> subsp. <i>tangshen</i> (Oliv.) D.Y.Hong                                       | XX-0-PRAG-LU000187 |
| 71 | <b>Lobelia inflata</b> L.  | XX-0-PRAG-LU000117 |

## Caprifoliaceae

- |    |  |                  |
|----|--|------------------|
| 72 | <b>Scabiosa drakensbergensis</b> B.L.Burt<br>(ex BG Teplice/ BG Stavanger) | XX-0-TEBLI-01853 |
|----|--|------------------|

## Caryophyllaceae

- |    |   |                    |
|----|---|--------------------|
| 73 | <b>Atocion compactum</b> (Fisch. ex Hornem.) Tzvelev<br>Georgia, Mzcheta-Mtianeti, Kazbegi Municipality, gorge of river Khole<br>(ex BG Klagenfurt) | GE-0-KL-2020/4674  |
| 74 | <b>Dianthus moravicus</b> Kovanda<br>Czech Republic, Moravský Krumlov, near St. Florian chapel, 1998  | CZ-0-PRAG-KV000394 |
| 75 | <b>Eremogone procera</b> (Spreng. ex Hornem.) Rchb  | XX-0-PRAG-KV000114 |
| 76 | <b>Gypsophila paniculata</b> L.<br>Slovakia, Komárno, Marcelová, 1970   | SK-0-PRAG-KV000560 |
| 77 | <b>Lychnis coronaria</b> (L.) Desr.<br>Slovakia, Konrádovce, 1962   | SK-0-PRAG-KV000754 |
| 78 | <b>Saponaria officinalis</b> L.   | XX-0-PRAG-LU000066 |
| 79 | <b>Silene nutans</b> L.   | XX-0-PRAG-JS000312 |
| 80 | <b>Silene vulgaris</b> (Moench) Garcke  | XX-0-PRAG-PE000886 |
| 81 | <b>Silene waldsteinii</b> Griseb.<br>Greece, Florinis, Mt. Voras, Kaimaktsalan, 2–3 km WNW of the filakion<br>at point 1963, 1985 (ex BG Göteborg)  | GR-0-GB-2001-2652  |
| 82 | <b>Viscaria vulgaris</b> Bernh.   | XX-0-PRAG-PE000888 |

## Celastraceae

- |    |   |                    |
|----|---|--------------------|
| 83 | <b>Euonymus alatus</b> (Thunb.) Siebold | XX-0-PRAG-PE000739 |
| 84 | <b>Euonymus nanus</b> M. Bieb.          | XX-0-PRAG-PE000819 |

## Cistaceae

- |    |  |                    |
|----|--|--------------------|
| 85 | <b>Helianthemum grandiflorum</b> subsp. <i>obscurum</i> (Wahlenb.) Holub | XX-0-PRAG-KV000566 |
|----|--|--------------------|

## Crassulaceae

- |    |  |                    |
|----|--|--------------------|
| 86 | <b>Crassula vaginata</b> Eckl. & Zeyh.<br>RSA, East. Cape, Drakensberg | ZA-0-PRAG-SR001966 |
|----|--|--------------------|



## Cupressaceae

- 87 *Juniperus scopulorum* Sarg. XX-0-PRAG-PE000133

## Cyperaceae

- 88 *Carex flava* L. CZ-0-PRAG-KV000243  
Czech Republic, Bílé Karpaty Mts., 1987
- 89 *Carex pendula* Huds. SK-0-PRAG-KV000265  
Slovakia, Lesná u Strání, 1959
- 90 *Eriophorum latifolium* Hoppe CZ-0-HBT-2017-03637  
Czech Republic, Provodín (ex BG Třeboň)
- 91 *Eriophorum vaginatum* L. CZ-0-PRAG-KV001399  
Czech Republic, Krušné hory Mts., Cínovec, 2020
- 92 *Rhynchospora alba* (L.) Vahl CZ-0-HBT-2017-03640  
Czech Republic, Doksy, Máchovo jezero pond (ex BG Třeboň)
- 93 *Schoenoplectus tabernaemontani* (C.C.Gmel.) Palla CZ-0-PRAG-KV001447  
Czech Republic, Lysá nad Labem, Hrabanovská černava, 2020
- 94 *Schoenoplectus tabernaemontani* (C.C.Gmel.) Palla XX-0-PRAG-VB000094

## Dipsacaceae

- 95 *Succisa pratensis* Moench XX-0-PRAG-KV001159
- 96 *Succisella inflexa* (Kluk) Beck SK-0-PRAG-KV001160  
Slovakia, Kráľovský Chlmec, bridge over the Latorica river, 1967

## Droseraceae

- 97 *Drosera rotundifolia* L. CZ-0-PRAG-KV001395  
Czech Republic, Doksy, 2020

## Elaeagnaceae

- 98 *Elaeagnus angustifolia* L. XX-0-PRAG-PE000038

## Ericaceae

- 99 *Andromeda polifolia* L. XX-0-PRAG-KV001379

## Fabaceae

100	<b>Baptisia australis (L.) R. Br.</b>	XX-0-PRAG-PE000734
101	<b>Coronilla coronata L.</b> Slovakia, Prosiek, Prosiecka dolina valley, 1967	SK-0-PRAG-KV000337
102	<b>Galega officinalis L.</b>	XX-0-PRAG-LU000077
103	<b>Genista pilosa L.</b> Slovakia, Súľovské skály rocks, 1960	SK-0-PRAG-KV000532
104	<b>Genista sagittalis L.</b>	XX-0-PRAG-KV000533
105	<b>Lathyrus latifolius L.</b>	XX-0-PRAG-KV000692
106	<b>Lotus corniculatus L.</b> Czech Republic, Praha - Lahovičky, near Vltava river, 2019	CZ-0-PRAG-KV001342
107	<b>Lotus pedunculatus Cav.</b> Czech Republic, Svor, 1998	CZ-0-PRAG-KV000742
108	<b>Trifolium ochroleucon Huds.</b>	XX-0-PRAG-KV001201

## Hypericaceae

109	<b>Hypericum maculatum Crantz</b> Czech Republic, České Středohoří Mts., Lukov, 7.8.2020	CZ-0-PRAG-SY000852
110	<b>Hypericum montanum L.</b> Czech Republic, Srbsko, 1960	CZ-0-PRAG-KV000611
111	<b>Hypericum perforatum L.</b>	XX-0-PRAG-LU000069

## Iridaceae

112	<b>Crocus heuffelianus Herb.</b> Ukraine, Hoverla Mt., 2007	UA-0-PRAG-KV000359
113	<b>Gladiolus imbricatus L.</b> Czech Republic, Mikuleč, 1958	CZ-0-PRAG-KV000547
114	<b>Gladiolus saundersii Hook.f.</b> RSA, East. Cape, Naudes Nek Pass (ex Silverhill Seeds)	ZA-0-PRAG-SR002084
115	<b>Iris domestica (L.) Goldblatt &amp; Mabb.</b>	XX-0-PRAG-LU000088
116	<b>Iris pseudacorus L.</b>	XX-0-PRAG-KV001468
117	<b>Iris sibirica L.</b> Czech Republic, Hořovice, Podluhy, Hrachoviště, 2001	CZ-0-PRAG-KV001476
118	<b>Sisyrinchium striatum Sm.</b> Chile, Valparaiso Region (Region V), La Campana (ex BG Klagenfurt)	CL-0-BONN-38612

## Juncaceae

119	<b>Luzula nivea (L.) DC.</b>	XX-0-PRAG-JS000249
-----	------------------------------	--------------------

## Lamiaceae

120	<i>Agastache rugosa</i> (Fisch. & C.A.Mey.) Kuntze	XX-0-PRAG-LU000718
121	<i>Betonica officinalis</i> L.	XX-0-PRAG-LU000092
122	<i>Hyssopus officinalis</i> L.	XX-0-PRAG-LU000094
123	<i>Leonurus cardiaca</i> L.	XX-0-PRAG-LU000097
124	<i>Lycopus europaeus</i> L.	XX-0-PRAG-LU000098
125	<i>Marrubium peregrinum</i> L.	XX-0-PRAG-KV000767
126	<i>Marrubium vulgare</i> L.	XX-0-PRAG-LU000711
127	<i>Melissa officinalis</i> L.	XX-0-PRAG-LU000099
128	<i>Monarda didyma</i> L.	XX-0-PRAG-LU000103
129	<i>Nepeta cataria</i> L. Slovakia, Velká Fatra Mts., Gaderská dolina valley, 1990	SK-0-PRAG-KV000809
130	<i>Nepeta cataria</i> L.	XX-0-PRAG-LU000104
131	<i>Ocimum tenuiflorum</i> L.	XX-0-PRAG-LU000178
132	<i>Salvia hispanica</i> L.	XX-0-PRAG-LU000185
133	<i>Salvia nemorosa</i> L.	XX-0-PRAG-KV001035
134	<i>Salvia sclarea</i> L.	XX-0-PRAG-LU000186
135	<i>Salvia transsylvanica</i> (Schur ex Griseb. & Schenk) Schur Romania, Borsă, Distr. Cluj	RO-0-JENA-7644700
136	<i>Salvia verticillata</i> L. Czech Republic, Karlštejn Javorka Mt., 1950	CZ-0-PRAG-KV001038
137	<i>Scutellaria baicalensis</i> Georgi	XX-0-PRAG-LU000112
138	<i>Stachys recta</i> L. Czech Republic, Karlštejn, Budňany, 1950	CZ-0-PRAG-KV001149

## Linaceae

139	<i>Linum flavum</i> L. Slovakia, Devínska Kobyla Mt., 1989 (ex BG Bratislava)	SK-0-PRAG-KV000732
-----	--	--------------------

## Lythraceae

140	<i>Lythrum salicaria</i> L.	XX-0-PRAG-VB000056
-----	-----------------------------	--------------------

## Malvaceae

141	<i>Alcea rosea</i> 'Nigra' L.	XX-0-PRAG-LU000119
142	<i>Althaea officinalis</i> L.	XX-0-PRAG-LU000118
143	<i>Tilia</i> × <i>euchlora</i> K.Koch	XX-0-PRAG-PE000210
144	<i>Tilia americana</i> L.	XX-0-PRAG-PE000214
145	<i>Tilia cordata</i> Mill.	XX-0-PRAG-PE000296
146	<i>Tilia platyphyllos</i> Scopoli	XX-0-PRAG-PE000293

## Melanthiaceae

147	<i>Paris quadrifolia</i> L. Czech Republic, Praha-Komořany, 1972	CZ-0-PRAG-KV000839
-----	---	--------------------

## Oleaceae

- |     |  |                    |
|-----|--|--------------------|
| 148 | <i>Fraxinus biltmoreana</i> Beadle                                       | XX-0-PRAG-PE000174 |
| 149 | <i>Fraxinus chinensis</i> subsp. <i>rhynchophylla</i> (Hance) A.E.Murray | XX-0-PRAG-PE000173 |
| 150 | <i>Fraxinus pennsylvanica</i> Marshall                                   | XX-0-PRAG-PE000172 |

## Onagraceae

- |     |                                     |                    |
|-----|-------------------------------------|--------------------|
| 151 | <i>Epilobium parviflorum</i> Shreb. | XX-0-PRAG-LU000122 |
| 152 | <i>Oenothera biennis</i> L.         | XX-0-PRAG-LU000123 |

## Papaveraceae

- |     |   |                   |
|-----|---|-------------------|
| 153 | <i>Papaver lisae</i> N.Busch<br>Russia, Caucasus, Kabardino-Balkaria (ex BG Göteborg) | RU-0-GB-1997-1169 |
|-----|---|-------------------|

## Plantaginaceae

- |     |  |                    |
|-----|--|--------------------|
| 154 | <i>Digitalis grandiflora</i> Mill.<br>Czech Republic, Karlštejn, 1960  | CZ-0-PRAG-KV000403 |
| 155 | <i>Digitalis purpurea</i> L.   | XX-0-PRAG-LU000152 |
| 156 | <i>Globularia cordifolia</i> L.<br>Slovakia, Velká Fatra Mts., 1988  | SK-0-PRAG-KV000552 |
| 157 | <i>Linaria genistifolia</i> (L.) Mill.   | XX-0-PRAG-KV000728 |
| 158 | <i>Microrrhinum litorale</i> (Willd.) Speta  | XX-0-PRAG-JS000311 |
| 159 | <i>Plantago lanceolata</i> L.  | XX-0-PRAG-LU000129 |
| 160 | <i>Veronica gentianoides</i> subsp. <i>gentianoides</i> Vahl<br>Georgia, N of Lajanurpheki, 650 m, Habitat: Roadside meadow, heavily grazed. Nordic Georgia Expedition 2007 (ex BG Göteborg) | GE-0-GB-2007-2474  |

## Poaceae

- |     |  |                    |
|-----|--|--------------------|
| 161 | <i>Achnatherum virescens</i> (Trin.) Banfi, Galasso et Bartolucci<br>Slovakia, Plešivecká planina, shady grove, 1963 | SK-0-PRAG-KV000869 |
| 162 | <i>Coix lacryma-jobi</i> L.  | XX-0-PRAG-SY000012 |
| 163 | <i>Eragrostis capensis</i> (Thunb.) Trin.<br>RSA, Gauteng (ex Silverhill Seeds)                                      | ZA-0-PRAG-SR002643 |
| 164 | <i>Helictotrichon pratense</i> (L.) Pilg.  | XX-0-PRAG-KV000152 |
| 165 | <i>Melica ciliata</i> L.<br>Slovakia, Malé Karpaty Mts., 1970  | SK-0-PRAG-KV000776 |
| 166 | <i>Melica transsilvanica</i> Schur<br>Slovakia, Tisovec, Hradová Mt, sunny rocks and ruins of Tisovec castle, 1963   | SK-0-PRAG-KV000778 |
| 167 | <i>Oryza sativa</i> L.   | XX-0-PRAG-VB000499 |
| 168 | <i>Phleum nodosum</i> L.<br>Czech Republic, Měčín, field road Radkovice - Bílky, 2005                                | CZ-0-PRAG-KV000854 |
| 169 | <i>Poa novarae</i> Reichardt<br>Amsterdam Island (ex BG & ZOO Pizeň/ MNHN Paris)                                     | TF-0-P-2001g11     |
| 170 | <i>Stipa capillata</i> L.  | XX-0-PRAG-KV001157 |
| 171 | <i>Stipa pennata</i> L.  | XX-0-PRAG-KV001154 |
| 172 | <i>Themeda triandra</i> Forssk.<br>(ex Silverhill Seeds)   | ZA-0-PRAG-SR002643 |

## Polygonaceae

- 173 *Fagopyrum esculentum* Moench XX-0-PRAG-LU000131  
174 *Rumex triangulivalvis* (Danser) Rech. fil. XX-0-PRAG-KV001018

## Primulaceae

- 175 *Lysimachia thyrsoiflora* L. CZ-0-HBT-2017-03934  
Czech Republic, Třeboň, Opatovický pond (ex BG Třeboň)  
176 *Primula denticulata* Sm. XX-0-PRAG-PE000737  
(ex BG Tübingen)  
177 *Primula japonica* 'Apple Blossom' A. Gray XX-0-PRAG-PE000723  
178 *Primula japonica* 'Miller's Crimson' A. Gray XX-0-PRAG-PE000735  
179 *Primula rosea* Royle XX-0-PRAG-PE000736  
180 *Primula veris* L. SK-0-PRAG-KV000170  
Slovakia, Súlov, 1968

## Ranunculaceae

- 181 *Aconitum lycoctonum* L. XX-0-PRAG-LU000138  
182 *Anemone sylvestris* L. CZ-0-PRAG-KV000086  
Czech Republic, between Karlštejn and Srbsko, bushy groves above  
the former brickyard, 1957  
183 *Clematis recta* L. CZ-0-PRAG-KV000328  
Czech Republic, Karlštejn, Javorka Mt., 1960  
184 *Eranthis hyemalis* (L.) Salisb. XX-0-PRAG-KV000446  
185 *Thalictrum minus* L. CZ-0-PRAG-KV001179  
Czech Republic, Karlštejn, Velká hora Mt., 1950  
186 *Trollius altissimus* Crantz CZ-0-PRAG-KV001216  
Czech Republic, Litoměřice, Hlinná, 1952

## Rosaceae

- 187 *Agrimonia eupatoria* L. CZ-0-PRAG-KV000015  
Czech Republic, Praha - Motol, 1962  
188 *Agrimonia procera* Wallr. XX-0-PRAG-LU000141  
189 *Filipendula ulmaria* (L.) Maxim. XX-0-PRAG-LU000143  
190 *Geum urbanum* L. XX-0-PRAG-LU000144  
191 *Potentilla pedata* Willd.ex Nestler SK-0-PRAG-KV000928  
Slovakia, Devínská Kobyla Mt., 1968  
192 *Pyracantha coccinea* M. Roem. XX-0-PRAG-PE000233  
193 *Sanguisorba officinalis* L. XX-0-PRAG-SY000815  
194 *Sorbus alnifolia* (S. at Z.) K. Koch XX-0-PRAG-PE000043  
195 *Spiraea media* Schmidt SK-0-PRAG-KV001129  
Slovakia, Muráň, 1977

## Rutaceae

- 196 *Phellodendron amurense* Rupr. XX-0-PRAG-PE000218

## Sapindaceae

- 197 *Acer rufinerve* Siebold & Zucc. XX-0-PRAG-PE000017

## Scrophulariaceae

- 198 *Glumicalyx flanaganii* (Hiern) Hilliard & B.L.Burt  
RSA, KwaZulu-Natal, Bushman's Nek (ex Silverhill Seeds) ZA-0-PRAG-SR002650
- 199 *Glumicalyx goseloides* (Diels) Hilliard & B.L.Burt  
RSA, KwaZulu-Natal, Bushman's Nek (ex Silverhill Seeds) ZA-0-PRAG-SR002649
- 200 *Gomphostigma virgatum* (L.f.) Baill.  
Lesotho, Leribe District, Ha-Makopela, ca. 2350 m, 5.5. 2018  
(ex BG München) LS-1-M-2018/1860
- 201 *Scrophularia scopolii* Pers.  
(ex BG Zakopane) XX-0-PRAG-SY000899
- 202 *Verbascum blattaria* L.  
Slovakia, Šahy, 1966 SK-0-PRAG-KV001244

## Solanaceae

- 203 *Datura stramonium* L. XX-0-PRAG-LU000156
- 204 *Nicotiana rustica* L. XX-0-PRAG-LU000159
- 205 *Nicotiana tabacum* L. XX-0-PRAG-LU000160

## Talinaceae

- 206 *Talinum paniculatum* (Jacq.) Gaertn. XX-0-PRAG-LU000136

## Urticaceae

- 207 *Parietaria officinalis* L. XX-0-PRAG-LU000165

## Verbenaceae

- 208 *Callicarpa bodinieri* H. Lév. XX-0-PRAG-PE000177
- 209 *Callicarpa dichotoma* (Lour.) K. Koch XX-0-PRAG-PE000176
- 210 *Verbena officinalis* L. XX-0-PRAG-LU000177

## Violaceae

- 211 *Viola odorata* subsp. *maderensis* (Lowe) Kunkel  
(ex BG & ZOO Plzeň/ BG Bayreuth) XX-0-PRAG-SR002467

## Seeds and fruits from plants cultivated in the greenhouses:

### Amaryllidaceae

- 212 **Zephyranthes filifolia** Herb. ex Kraenzl. AR-0-TUEB-4538  
Argentina, Cordoba, Dept. Cosquin, N of Capilla del Monte, silicate,  
1020 m (ex BG Tübingen/ BG Berlin)
- 213 **Zephyranthes minima** Herb. XX-0-PRAG-SR000540  
(ex BG St. Gallen)
- 214 **Zephyranthes primulina** T.M.Howard & S.Ogden XX-0-TUEB-4606  
(ex BG Tübingen/ BG Göteborg )
- 215 **Zephyranthes** sp. AR-0-PRAG-SR002275  
Argentina, Salta, Quebrada el Sunchal, above hotel "El Maray",  
2282 m (ex Zürich Sukkulentsammlung)

### Apiaceae

- 216 **Oenanthe crocata** Lowe. PT-0-PRAG-SR000864  
Madeira, Levada of Six Springs

### Apocynaceae

- 217 **Pachypodium lamerei** Drake XX-0-PRAG-KS007046

### Araceae

- 218 **Anthurium verapazense** Engl. GT-0-PRAG-TR000579  
Guatemala, coll: Haager J.

### Asphodelaceae

- 219 **Aloe cooperi** Baker ZA-0-PRAG-KS012430  
RSA, KwaZulu-Natal

### Begoniaceae

- 220 **Begonia grisea** A.DC. BR-0-M-2010/1591  
Brasil (ex BG Mnichov)
- 221 **Begonia homonyma** Steud. XX-0-PRAG-TR001533  
(ex BG Wien Alpengarten)
- 222 **Begonia paranaensis** Brade XX-0-PRAG-TR000549
- 223 **Begonia sartorii** Liebm. XX-0-PRAG-TR001234

## Bromeliaceae

- 224 *Pitcairnia* sp. XX-0-PRAG-TR000531  
(ex Haager J.)

## Cactaceae

- 225 *Rhipsalis puniceodiscus* G.Lindb. BR-0-PRAG-KS007662  
Brazil, Rio de Janeiro, Tijuca National Park (ex BG Liberec)

## Caricaceae

- 226 *Carica papaya* L. XX-0-PRAG-TR000359

## Crassulaceae

- 227 *Aeonium canariense* subsp. *virgineum* (Webb ex Christ) Bañares XX-0-PRAG-KS010373  
228 *Dudleya pulverulenta* (Nutt.) Britton & Rose XX-0-PRAG-KS007258

## Dioscoreaceae

- 229 *Dioscorea sansibarensis* Pax XX-0-PRAG-TR001171  
(ex BG & ZOO Stuttgart - Wilhelma)

## Fabaceae

- 230 *Erythrina crista-galli* L. XX-0-PRAG-SR000051  
231 *Mundulea sericea* (Willd.) A.Chev. XX-0-BOCH-1000-2304  
(ex BG Praha-Troja/ BG Bochum)

## Gentianaceae

- 232 *Lisianthus nigrescens* Schltld. & Cham. XX-0-DR-015394  
(ex BG München)

## Geraniaceae

- 233 *Pelargonium zonale* (L.) L'Hér. ZA-0-PRAG-SR002646  
RSA, East. Cape, Nuwekloof, in the verge of R332

## Gesneriaceae

- 234 *Sinningia bulbosa* (Ker Gawl.) Wiehler XX-0-PRAG-KS009862  
(ex Zürich Sukkulentensammlung)

## Haemodoraceae

- 235 *Wachendorfia thyrsoiflora* Burm. ZA-0-GIESS-2010-M-129-2  
RSA, Tsitsikamma Forest, 20.3. 2004 (ex BG & ZOO Plzeň)



## Marantaceae

- 236 *Marantochloa leucantha* (K.Schum.) Milne-Redh. XX-0-PRAG-TR000814  
(ex BG & ZOO Stuttgart - Wilhelma)

## Melastomataceae

- 237 *Monolena primuliflora* Hook.f. EC-0-PRAG-TR000352  
Ecuador, S. Francisco de Borja, coll: Haager J.

## Montiaceae

- 238 *Cistanthe grandiflora* (Phil.) Carolin ex Hershk. CL-0-TEBLI-00902  
Chile, Coquimbo Region, Elqui Province, alongside Chile Highway 5  
near Totoralillo, 2011 (ex BG Teplice)

## Passifloraceae

- 239 *Passiflora capsularis* L. XX-0-PRAG-TR001183  
(ex BG Cluj-Napoca Al. Borza)

## Phytolaccaceae

- 240 *Rivina humilis* L. XX-0-PRAG-TR000416  
(ex BG Cluj-Napoca Al. Borza)